



Legacy Land Trust News

Creating a legacy of protected lands since 1993

Home Grown Onions: LLT and Fagerberg Farms



Fagerberg Onions and Mountain Views

We hear stories about the Rocky Mountain Front Range cool nights and bright sunny days being a perfect growing environment for certain vegetables like spinach and broccoli. Well, onions also seem to fall into this category. This year, Legacy Land Trust was approached by Lynn Fagerberg to complete a conservation easement on 208 acres of irrigated crop land just south of Eaton. In addition to providing protection of stunning views of the Rocky Mountains from a major Weld County highway, this easement protects the ability of our region to grow high quality produce.

In a perfect world, maybe every region would be able to grow its own food that would sustain a population. For the first time in U.S. history, our nation is a net importer of food. On the other hand, decisions that are made locally, like the one by the Fagerbergs, can empower an area to rededicate

its own assets, leading to agricultural sustainability. LLT believes the protection of local food production is important for northern Colorado, culturally, environmentally, economically, socially, and practically.

Fagerbergs and other area farms demonstrate that this region has the capacity to grow quality produce. Since 1948, Fagerberg Farms have been associated with high quality onions. The northern Colorado climate with dry days and cool nights reduce the need to apply pesticides and fungicides and produces some of the nation's best sweet onions. The Fagerbergs commitment to production agriculture is evident in the considerable investment they have made by adding land to their farm portfolio and their installation of a state of the art drip irrigation system which almost doubled their yield while reducing water usage by 40%. Shortly after purchasing the 208 acres which will be conserved with a conservation easement, the Fagerberg's started working the soil. Residents of adjacent subdivision asked Lynn Fagerberg what kind of homes would sit on the land, Lynn's response was "We are growing onions, not homes." The Fagerberg's commitment to agriculture and conservation should be an inspiration to all of us. LLT is proud to have the Fagerberg's as partners in one of our most recent conservation easement projects.

Project Update

By the time this newsletter reaches your mailbox, LLT will have closed on two projects in Weld County. One is highlighted in this newsletter (above) the other is in the Briggsdale area adding 1,858 acres to existing easements in the Crow Creek watershed. We are still working with The Nature Conservancy, GOCO and the U.S. Fish and Wildlife Service to conserve additional acreage in the Chalk Bluffs, creating a corridor of protected land between the Chalk Bluffs and the Pawnee National Grasslands.

In Larimer County we are adding 125 acres of grassland and riparian habitat to the Stonewall Creek Ranch, completing two conservation easements which are adjacent in the Rist Canyon area, and adding more conserved acreage in the Buckeye

continued on page 7

Inside . . .

<i>Stewardship & Resource Development Updates</i>	<i>page 3</i>
<i>Upcoming Art Show</i>	<i>page 4</i>
<i>Annual Report, Fiscal Year 2006-2007</i>	<i>page 5</i>
<i>Planned Giving Information</i>	<i>page 6</i>
<i>Welcome Kathy and Emily and Many Thanks</i>	<i>page 7</i>
<i>New Business Member and Odell Contribution</i>	<i>page 8</i>



Legacy Land Trust

Our Mission: to conserve and protect key natural, scenic and agricultural lands of northern Colorado that make this region a special place to live and work.

Board of Directors

Bill Bertschy, Fort Collins, *President*
Sheila Baker, Fort Collins,
Vice-President, Projects
Lew Grant, Wellington,
Vice-President, Resources
Ted Swanson, Buckeye, *Secretary*
Gary Packard, Livermore, *Treasurer*
Bud Clemons, Greeley
Patty Dow, Fort Collins
Peggy Ford, Greeley
Debby Morgan, Laporte
Jean Sutherland, Fort Collins
Phil Teeter, Wellington

Staff

Jeff Jones, *Executive Director*
Jane Clark, *Development Director*
Emily Saeli, *Stewardship Coordinator*
Kathy Watts, *Office Manager*

Volunteers

Dave Armstrong
Van Baker
John Beach
Joe Chafey
Kate Crist
Mark DeGregorio
Sue Foster
John Hafnor
Jake Jansen
Allison Krachic
Sam Kunkle
Sally Lee
Cathy Morgan
Kathy Packard
Evan Patterson
Emily Saeli
Bob Streeter

**214 S. College Ave., Ste. 200
Fort Collins, Colorado 80524**
(970) 266-1711
(970) 482-4858 (fax)
llt@frii.com
www.legacylandtrust.org

From the Executive Director: The Season's Rhythms

With the coming of Fall comes the Land Trust Dance – it's called closing the projects before December 31st. The phone rings more, and we see an increase in project activity. Currently we are completing several easements and starting new ones. With this increase in project activity, comes the need to cover our expenses, so we've been busy applying for different funding opportunities. Thank you New Belgium Brewing for your generous contribution and to Colorado Conservation Trust for their ongoing and new commitments to help increase LLT's ability to serve our northern Colorado community with great conservation projects. It takes many great partners, including our generous landowners and members to make our landscape protection happen.

On staff notes, our Conservation Planner, Jeannette Hallock-Solomon accepted a full-time planning position in Florida where their family is located, so we were sorry to see her go, but appreciate the great opportunity for her and her family. Our half-time CCT Fellow, Emily Saeli has taken over Jeannette's work, plus other functions as Stewardship Coordinator. And in another shuffle, our Administrative Assistant, Nanci Erskine will be focusing more time on her painting career and scaling back with LLT. We appreciate all the quality contributions she has made over the year with us and look forward to having her help out with small projects from time to time. Later in the Newsletter you will see our welcome to Kathy Watts, our new part-time Office Manager. Kathy brings a bright smile and tons of financial and membership services expertise to our operation. We are glad to have her with us!



Last but not least, please join us for our Annual Meeting on Thursday, September 27th at the Environmental Learning Center from 7 to 9 pm! In addition to dessert goodies, we will have a program of completed LLT conservation projects, notes from committees and staff, and a general informal good time! We have much to celebrate.

– Jeff Jones

From the President: Much Ground to Cover

Thank you to everyone who attended, helped, and planned the fantastic summer picnic at Grant's Family Farm. We couldn't have done without everyone and can only hope to build on this event for next year. For Board news, a special thank you to Gary Packard our treasurer and long time Director who will be leaving the Board due to term limits in September. On an up note, we will have some new Board members to welcome after our annual meeting in September.

Now down to business! Behind the scenes of any successful non-profit's expansion lies the enabling strategies of the how, when and where. Perhaps the most important of these is the how. Legacy Land Trust decided last December to expand our acreage protected per year, but that alone doesn't magically make it happen. It is hard to marshal resources to effect any major change such as expanding services five fold in a world where people and volunteers interested and qualified to help are already very busy with their own personal and professional lives.



LLT is very fortunate for the second time in less than a year to have the investment of Colorado Conservation Trust (CCT) at this stage of our expansion plans. LLT is one of four land trusts in the state that have been invited to participate in a

continued on page 7

Stewardship Notes: In the Field

Wow, summer always goes too fast, especially when you have the opportunity to spend it visiting some of the most beautiful properties in northern Colorado! The 2007 conservation easement monitoring season has moved along smoothly with the help of our fabulous volunteers — LLT has been fortunate to benefit from the experience and enthusiasm of our highly qualified monitoring team. Many thanks to David Armstrong, Sheila and Van Baker, Sam Kunkle, and Alison Kratchik for all of their valuable assistance. In order to build on this year's success, we're currently recruiting and training new volunteers to assist with field monitoring and file management. So give us a call (407-1434) and ask for Emily.

The key word for this summer is "green" — all of the spring and recent precipitation has led to happy native vegetation! I've had the pleasure of walking through meadows where blue grama and western wheatgrass are thriving under good management and afternoon rain storms. Unfortunately the annual weeds and non-native grasses have flourished as well; it's been interesting listening to property owners describe weed management techniques ranging from chemical applications to using aphids as a biological control.

Wildlife encounters have included a variety of songbirds and raptors, mule deer and white tail deer (including a white-tail fawn we almost stepped on as we walked across a grassy meadow!), elk, and an enormous rattlesnake skin, freshly

continued on page 7

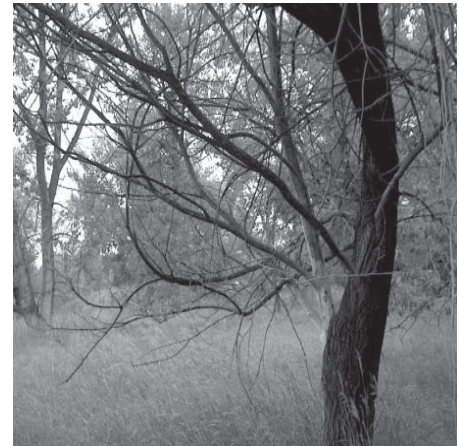
Resource Development: That Sense of Place

What are the special outdoor places you remember of your childhood and how do you remember them? The rope swing over the creek, your favorite climbing tree, the fort that needed constant remodeling — complete with the sights, smells, weather, and the visceral memories that linger to this day. Many would agree these experiences or sense of place are what shaped us to appreciate the outdoors and understand our place in the natural world. Among other fun activities, Jill Ozarski, the Executive Director of Colorado Coalition of Land Trusts, spoke about a sense of place at our second annual summer picnic celebration.

She shared the feelings and excitement of starting her vacation with our picnic on her way back to the sandy shores of Lake Michigan where she grew up in a lake country environment. She called on all of us to continue our vigilance in protecting the special places in northern Colorado that provide the same kinds of information to young people growing up today that we all had access to as children. I know all of us have some of those special places in our memory banks — isn't it a good idea to continue to nurture that sense of place today and share it with our children and grandchildren...and to preserve some of the "places" themselves? That's what Legacy Land Trust is all about, and with your continuing involvement and support, we are getting it done!

Our thanks to Jill and all our members, landowners, and guests who helped make the picnic another huge success! Our only dilemma is deciding to keep it a picnic for next year, or ramp it up to festival status. August or September?? Harvest Festival? Your thoughts?? Email us as developllt@frii.com.

- Jane Clark



Near the Poudre River

Board and Committee Schedule

LLT Board of Directors

The Board meets the fourth Monday of each month at 214 S. College Avenue. Members and guests are welcome. Contact the LLT office for any last-minute changes to the meeting schedule. Meetings begin at 6:30 pm. Bill Bertschy is the chair.

Resource Committee

The Resource Committee consists of Board members, volunteers and staff. Its role is to assist the Board of Directors in funding the Land Trust's programs. It meets once a month at noon at the Stonehouse Grille. Jean Sutherland is the acting chair. Please call for the day.

Project Identification Team

The PIDT meets the second Tuesday of each month at 6:30 pm at the LLT office. It meets to discuss project-related issues and make recommendations to the Board about adopting and approving projects. Sheila Baker is the chair.

Finance Committee

The Finance Committee meets to develop an annual budget for the LLT, oversees investment of the stewardship endowment and ensures that we are adhering to accepted accounting and financial management practices. Debby Morgan is the chair.



Lew Grant's famous Farm Tours
Photo: courtesy Lydia's Style Media



Landscape Legacies Art Show

to benefit the land conservation programs of

Legacy Land Trust



at the **Poudre River Arts Center**
Saturday, Oct. 27 thru Friday, Nov. 2, 2007
Closing reception 5-9 pm Nov. 2nd

This sixth annual landscape art show will feature works of over 30 local and regional artists in oils, watercolors, prints, drawings, pastels, sculpture & ceramics, inspired by the great local landscapes of northern Colorado.

Legacy Land Trust has been conserving these special landscapes since 1993 and is particularly concerned with the protection of local farmland and ranch lands that provide so much of our visual experience as well as provide homes for wildlife. These lands also provide a sense of place that is vital for our cultural life, as well as provide diversity in our economy.

Please come join us to view and purchase these great works that not only support the arts, but local land conservation as well. We look forward to seeing you there!



"Green and Purple"
Scott Lines

For more information, contact Jane Clark at
407-1434, developllt@frii.com, or see our website at www.legacylandtrust.org.



Urban Preserve, West Fort Collins

Legacy Land Trust Annual Report 2006-2007

Land Conservation

From Masonville and the Buckhorn, Owl Canyon and the west edge of Fort Collins, to Red Feather, North Park and back over to the Chalk Bluffs, Legacy Land Trust conserved over 2,500 acres of lands critical to wildlife and ranching with a precious urban preserve mixed in for good measure.

The completion of the Eagle Rock Ranch project in partnership with The Nature Conservancy, GOCO, the U.S. Fish and

Wildlife Service, and of course, the landowners capped off a good year of conservation that protected some large-scale native grasslands to a more intimate urban preserve of 25 acres of meadow and woodland on the west edge of Fort Collins. In between those extremes, we protected 165 acres of very rugged wildlife habitat in the Red Feather area, 73 acres of good forest ground in the Buckhorn, 80 acres of the unique expanding pinyon grove at Owl Canyon, an additional 49 acres of mule deer habitat near Masonville, and an additional 190 acres of sage grouse habitat on a working cattle ranch near Rand.

Legacy Land Trust is fortunate to work with exceptional landowners in putting all these projects together, and appreciate the long-lasting relationships that have developed over the years in our multi-phased projects.

Organizational Strength

For the overarching goal of ongoing support and sustainability, your land trust has made certain key efforts for the fiscal year '06-'07. These include strengthening our ties to the Weld and Larimer County business and civic communities by increasing outreach efforts. We've visited with various Kiwanis and Rotary groups, other business, civic and conservation groups, the Bellvue Historical Preservation group, participated in the Colorado Farm Show, and enjoy membership in the Greeley Chamber of Commerce and their Agriculture Committee.

In addition to strong Committee participation on all levels, the Resource Committee put together the first annual picnic celebration in August 2006 at the Grant Family Organic Farm which was a huge success, as was the fifth Landscape Legacies Art Show in November at the Poudre River Arts Center. LLT has also increased its business membership program by building relationships in Larimer and Weld Counties' economic communities.

From a staff and board perspective, personnel functions were somewhat reorganized following the change of administrators in early 2007, and perhaps most important was the strategic planning and goal setting retreat held in December 2006. The goals set forth at that session will be operationalized through the Executive Committee starting in the next fiscal year ('07-'08). To add to the mix of talent on the Board of Directors, LLT welcomed Phil Teeter of Wellington with his broad knowledge of land use and agricultural issues, Peggy Ford of Greeley bringing Weld County history to life, and re-welcomed Patty Dow of Fort Collins with her in-depth knowledge of legal, tax, and financial planning matters.

As always, none of this is possible without the dedication and generosity of all our conservation easement donors, financial donors, members, volunteers and otherwise capable supporters. A warm thank you to all who embrace the notion of leaving a valuable land legacy for years to come and helping Legacy Land Trust achieve these fine goals.

Legacy Land Trust	
<i>Financial Statement Fiscal Year 2006-2007</i>	
Current Assets	
CASH	\$ 59,405
STEWARDSHIP ENDOWMENT FUNDS	\$ 398,507
PREPAID EXPENSES	\$ 1,740
Other Assets	\$ 4,700
CONSERVATION EASEMENTS	\$ 90
TOTAL CURRENT ASSETS	\$ 464,442
Liabilities And Net Assets	
CURRENT LIABILITIES	\$ 14,122
NET ASSETS	\$ 450,320
TOTAL LIABILITIES & NET ASSETS	\$ 464,442
Operating Income and Expenses	
TOTAL OPERATING INCOME	\$ 212,308
TOTAL OPERATING EXPENSES	\$ 182,381
BALANCE AS OF JUNE 30, 2006	\$ 29,927
Expenses	\$ 182,381
Program Services	\$ 124,019
Management & General	\$ 45,595
Fundraising	\$ 12,767
Sources of Operating Income	\$ 212,308
Membership Dues & Contributions	\$ 66,965
Program Revenue	\$ 51,109
Grants and Interest	\$ 48,240
Other Income	\$ 45,913



Hidden Canyon Aspens, Larimer County

Your personal legacy can make a difference forever...

Legacy Land Trust is a permanent protector of landscapes of conservation significance in northern Colorado.

It is our duty to ensure that the conservation we achieve remains in tact. To that end, we have a *stewardship* endowment approaching one-half million dollars to make sure the conservation values of these treasured landscapes are defended in perpetuity. This endowment is only for the purpose of monitoring and defending the conservation status of properties we are involved with.

By contributing to our *operating* endowment or *operating funds*, you invest in the long-term success of LLT. You are also investing in our ability to continue as a significant force in local land conservation, protecting some of northern Colorado's great landscapes and its creatures.

You can invest in Legacy Land Trust in the following ways:

Bequests: We encourage you to consult with your attorney or financial advisor about including Legacy Land Trust in your estate plans and designating assets that will maximize the potential tax advantages of your gift.

If you are leaving a gift to Legacy Land Trust through your Will or Trust, the following suggested wording and legal information can be shared with your attorney:

"I give, devise or bequest to the Legacy Land Trust, 214 So. College Ave., Ste. 200, Ft. Collins, CO 80524 the sum of \$_____ (insert amount or percentage) to be used for its general purposes."

For legal purposes, Legacy Land Trust's corporate name is Legacy Land Trust. We are an IRS-approved 501(c)(3) non-profit charitable organization. Our tax exempt identification number is 84-1277019.

Life Insurance: You can make Legacy Land Trust the beneficiary of a life insurance policy (new or existing), and the premiums you pay become tax deductible.

Charitable Remainder Trust: By donating some of your existing cash or property to a trust, you will receive an immediate tax credit based on the amount of the donation and your life expectancy. You will receive money from the trust during your lifetime and the Land Trust would receive the remaining capital upon your passing.

Thank you for your consideration of a planned gift to Legacy Land Trust. We are glad to be a meaningful part of our local community.

Join or contribute to Legacy Land Trust!

If you've been meaning to join the Land Trust, or contribute your additional support, please fill this out and send it to us. If you know of someone you think might want to join or contribute, you can send us names and addresses and we'll send them a brochure.

Membership:	General membership \$35 _____	Century \$100 _____	Grantor \$1,000 _____
	Heritage \$50 _____	Steward \$500 _____	Sustainer \$2,500 _____
	Student \$15 _____		
General Operating Support:	\$50 _____	\$100 _____	\$500 _____
Corporate:	Friend \$1,000 _____	Sponsor \$2,000 _____	Partner \$5,000 _____
Save-an-Acre Fund:	\$50 _____	\$100 _____	\$500 _____
			Other _____
			Steward's Circle \$7,500 _____
			Other _____

Name _____ Address _____

City _____ State _____ Zip _____ E-mail _____

CHECK, CASH, OR CREDIT CARD

(circle one)

VISA or MASTERCARD # _____ **Expires** _____ **Name on Card** _____

Please return to *Legacy Land Trust*, 214 S. College Ave., Suite 200, Fort Collins, CO 80524 **Thank You!**

The Legacy Land Trust is a 501 (c)(3) private, non-profit organization. Your donation is tax-deductable to the extent allowed by law.

Welcome Kathy & Emily!

Just in time for our fiscal year-end and picnic frenzy, Kathy Watts decided she did, in fact, want a part time job with LLT! Kathy retired from 18 years with the Hewlett Packard Credit Union in 2002. She started working in credit unions in 1973 at Sterling Community Federal. In her 34 year financial career, Kathy has been exposed to all facets of customer and member services, as well as accounting and loan processing, and all the fiduciary responsibilities that come with the banking industry. Since retiring from HP, in her words, she “has volunteered for Hospice, taken care of her home, yard, vegetable and rose gardens, and even though she and her late husband, Terry, traveled extensively through the lower 48, she was always glad to get back to Colorado.” We are delighted to have Kathy as our new Office Manager. She will assist in accounting functions, manage membership information and services, and generally keep us all in line!



Kathy Watts

As you may already know, Emily Saeli joined Legacy Land Trust in June of this year as our one-half time Colorado Conservation Trust Fellow. She has taken the position of Stewardship Coordinator, conducting or coordinating the annual monitoring site visits of all the properties LLT holds easements on (she promises to tell good field stories for those of us stuck in the office). She will also manage all the conservation easement files and their annual reports. Emily comes to us with



Emily Saeli

her masters in Forest Sciences from CSU, with a concentration in community-based resource management. She has extensive knowledge and experience in working with communities in the context of resource management, and as it applies to landowner relations. Emily is a great addition to the LLT team!

Project Update *continued from page 1*

area. LLT is also initiating the first phase of land protection on a large ranch containing some of the best riparian/wetland habitat in Larimer County.

In Jackson County, we are starting the first phase of conservation on a ranch nestled at the headwaters of a number of streams which feed the North Platte watershed. The landowner would like to protect the entire ranch over a two year period. We are also working on a large addition to an existing North Park Ranch easement.

Many more thanks...

We've had the best “Christmas” ever since last October. We are up and running on all our new computers and new server, and last month a new HP color laser printer landed on our doorstep to round out our technology suite. This valuable donation, which will greatly improve the lives of all of us here at the office, was through the HP employee gift program and an anonymous donor.

Also in the mix, is a very handy HP Office Jet G85 scanner and ink jet color printer to help round out our graphics abilities. Now you know where all the “thank you bookmarks” come from! Our incredible thanks to Eric and Jan Jensen for this meaningful gift. Eric and Jan contributed the first conservation easement to LLT in 1994 on their property in Red Feather along the Elkhorn Creek, so their support continues year after year! Thanks to our HP friend, and to Eric and Jan.

From the President *continued from page 2*

pilot project of CCT that will assess organizational effectiveness, develop work plans for the future, and mentor the completion of the work plans. The goals for CCT are to create stronger, more effective and sustainable land trusts in the state. The goals for LLT are to bridge the gap between an organization that is stable but somewhat static into one that performs more dynamically in the region. This will be a minimum one year commitment between CCT and LLT with opportunities for further collaboration. We are indeed, very grateful for this opportunity to reach our next level of accomplishments and service to landowners and the community. Stay tuned as we cover new ground!

One last note, this will be my last newsletter as President. For the past two years our organization has grown and matured beyond most expectations. I want to express my admiration for work accomplished and sincere appreciation to current and recent past members of the Board of Directors and our incredible staff!

- Bill Bertschy

Stewardship Notes *continued from page 3*

shed and deposited at the mouth of an old prairie dog burrow. Sam Kunkle shared his experiences with us:

“The animals I met were happy elk, deer, turkey and other birds – with the possible exception of a rattlesnake that flew by dangling from a hawk’s beak. He was less enthusiastic. While making my rounds with the landowners, I came to learn that LLT works with many sharp naturalists. I met birders, two biologists, a forester/author, a mathematician, a land-use planner and a writer-editor. Nice to interact with such talent!”

As the season winds down and the focus shifts from site visits to other projects, I’m looking forward to spending time this fall and winter working on ideas for expanding the role of stewardship in ways that would be helpful to landowners and the educational community. Thanks again to all our volunteers and landowners.

- Emily Saeli



Legacy Land Trust
 214 S. College Avenue, Suite 200
 Fort Collins, CO 80524

Non-Profit Organization
 U.S. Postage Paid
 Fort Collins, CO 80524
 Permit No. 534

Return Service Requested

**Annual Meeting Notice
 & Ballot Inside**

Appreciation for New Frontier Bank & Odell Brewing

New Frontier Bank of Greeley recently joined LLT as a Legacy Business Member recognizing the importance of quality land conservation in northern Colorado includ-



ing the preservation of working farms and ranches. New Frontier Bank is a full service commercial bank with a large commitment to supporting and financing agricultural businesses. We are delighted to have them as one of our new business members!

Odell Brews up Generous Contribution

Huge thanks to Odell Brewing for the very generous contribution to LLT from their outstanding taster tray sales for the entire month of July!

We were one of their “Charities of the Month,” and it was a good month indeed. Odell’s also kindly provided great beer and a space for us to have a wonderful volunteer recognition evening. Thanks Odells!

